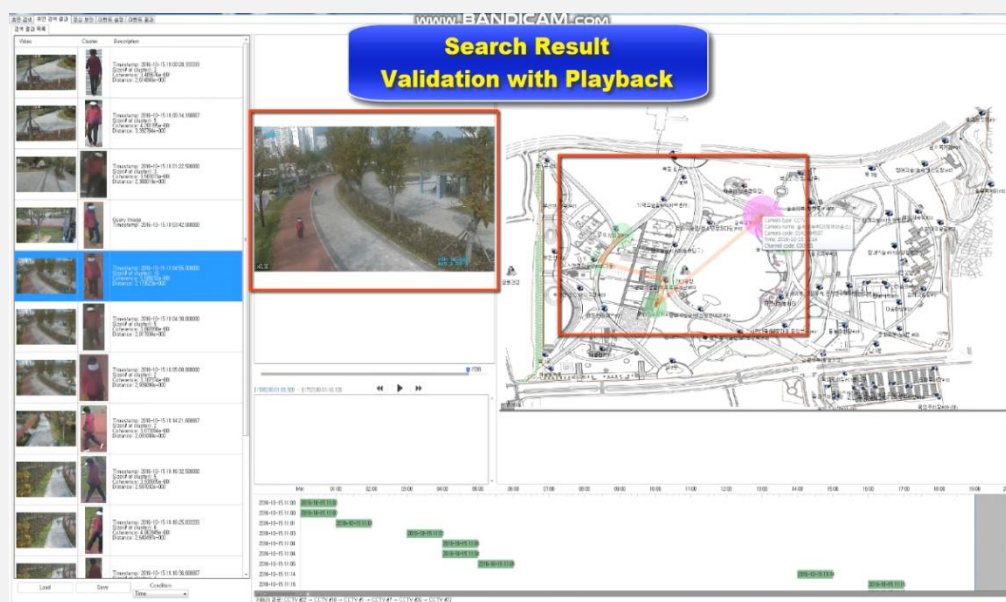


# Person/Vehicle Detection and Re-Identification Technology



## Technology Summary

- A technology for detecting a person or a vehicle from multiple CCTV camera videos and re-identification (Re-ID) of a person or a vehicle to be searched among the detected persons or vehicles
  - Obtain person / vehicle image DB and GT collected in real environment CCTV
  - Person / vehicle detection and Re-ID technology applying deep learning technology



## Advantages

- Deep Learning Network Optimization and Model Learning for Human / Vehicle Detection and Re-ID
  - One-stage object detection deep learning network optimization
  - Triplet-loss based object Re-ID deep learning network optimization
  - Learning by person / vehicle image DB from real environment CCTV → Optimized for CCTV image recognition
- can be used in recognition and tracking of accidents and crime suspects / vehicles, and lost children

## Potential Applications

- all video data including persons / vehicles such as CCTV / vehicle black box / smart phone report video
  - Integrated CCTV Control Center
  - Public & Surveillance Security Systems
  - Amusement Park



## Core Patent

- OBJECT TRACKING METHOD AND SYSTEM, US 12/433522
- OBJECT-TRACKING APPARATUS AND METHOD IN ENVIRONMENT OF MULTIPLE NON-OVERLAPPING CAMERAS, US 13/592272

## Development (TRL : 7)

## Inventor Point of Contact

Geon-Woo Kim  
Information Security Research Division  
Hyper-connected Communication  
Research Laboratory

## Licensing Contact

Su-Jin Youn  
Technology Commercialization Division  
Tel : +82-42-860-5092  
Email: sjy@etri.re.kr